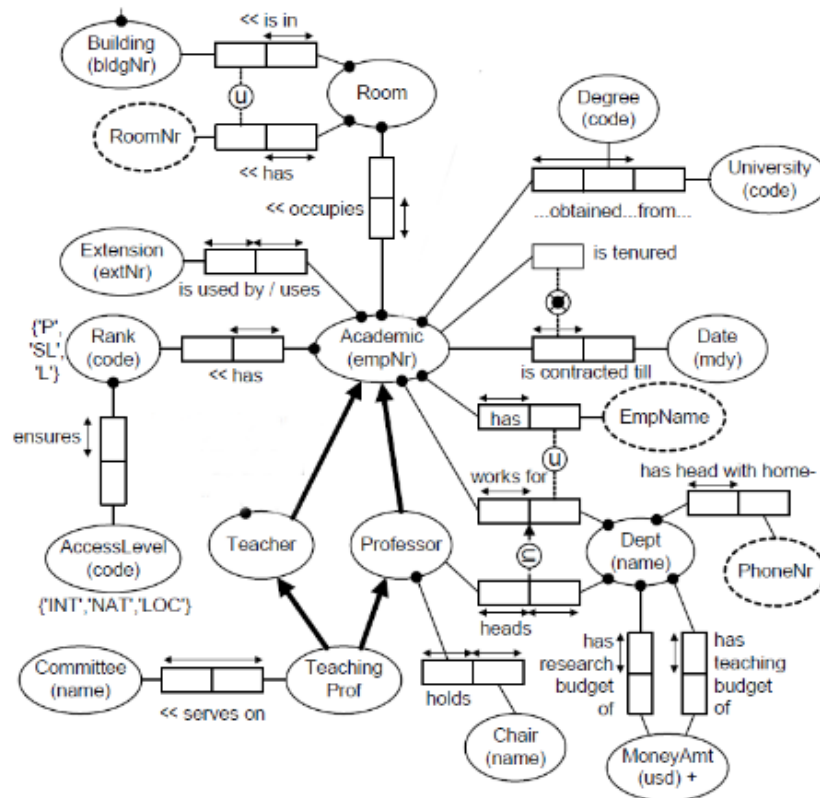


Assignment 4, Exercise 2: Last Part on Rmap

- As a last example, an excerpt of the ORM example from the document ORM-Intro (see website) need to be mapped using Rmap. Map and explain your solution with the six steps of Rmap presented in the lecture!



Example Solution



Explanation:

- Chair is 1:1 related with Academic → grouped into.
- Between Committee and TeachingProf is a mn relationship → new table
- Rank plays 2 roles → own table
- Extension is 1:1 related with Academic → grouped into.
- Rooms are identified by bldgNr + RoomNr and are **occupied** by Academics.

- Education is identified by empNr and the degreeCode. (as 1 University offers many degrees) → own table
- Academics are either tenured or contracted till a certain date → grouped into with xor-constraint.
- Dept plays many roles → own table with phoneNr, the budgets and the name of the head (not in Academic to avoid nulls); referential integrity is secured.
- The combination of EmpName and Dept is unique → underlined